



Connections

Newsletter for Friends of Six Mile Cypress Slough Preserve

www.sloughpreserve.org

April 2017

INSIDE THIS ISSUE

Presidents Notes	1
Life Member Named	2
Friends Accomplishments	2
Gathering Guest Speaker	3
Along The Boardwalk	3
Annual Meeting	3
Friends Field Trips End	4
Friends Corner	5
Friends Website Update	5
Summer Camp Scholarships	6
Photo Contest Winners	7-8
Membership News	9

Friends of Six Mile Cypress Slough Preserve
7791 Penzance Blvd.
Fort Myers, Florida 33966

Phone 239-533-7557

RETIRED PRESIDENT'S NOTES



Immediate Past President
Carolyn Babb

Hello Friends! I am now the **retired** President of the Friends. The organization is now in the excellent hands of Theresa Roake, previously the Secretary of the Friends. She will be a great President for us. I am looking forward to working with her and the board on new endeavors.

The past ten years have gone so fast I can hardly believe it. It began innocently enough with an interest in helping with the newsletter, quickly went on to being on the exhibit committee for the new building, and even the store start up committee. It has been a busy ten years.

Thank you to Joyce Sanders for asking me to be on the Friends Board. Friends and the Slough are a wonderful part of my life and will continue to be so forever.

My friends on the Board made the six years as President such a rewarding experience. Thank you for all of the support over the years.

Thank you to the staff at the Slough for your support as well. I hope we always remain friends.

I will enjoy my retirement at Otter Pond and in my rocking chair on the deck of the Interpretive Center. And for sure I will...

...See you in the Slough.

Carolyn Babb,
Immediate Past President

Officers

President: Theresa Roake
Secretary: Open

Vice President: Sabine Vandenhende
Treasurer: Jean Scholz

Immediate Past President: Carolyn Babb

Directors

Lyn Brown
Charles O'Connor

Donna Cressman
Steve Tutko

Jeff Key
Bud Schopp

Terri Krass

Advisory Board

Jacquelin Cadkin
Cadkin Foundation

Dr. William Hammond
Florida Gulf Coast University

Wiley M. Parker, A.I.A.
Parker / Mudgett / Smith Architects, Inc.

Parks and Recreation Liaison

Heather Gienapp, Supervisor, Six Mile Cypress Slough Preserve

Connections Editor: Steve Roake, Copy Editor: Bruce Bunch

CAROLYN BABB IS NAMED LIFE MEMBER OF FRIENDS

Carolyn Babb has been active in the Friends of Six Mile Cypress Slough Preserve organization since she started volunteering over 12 years ago.



Carolyn Babb

For the past 6 years she has been the President of our Board of Directors. Prior to that, she served as Vice President. In addition, she has worn many hats through the years. She m a n a g e d

Friends Corner, served as editor of our newsletter, managed our social media accounts, corresponded with members and the media, administered our annual photo contest, provided support for Slough staff, represented the Friends at community and Slough events, completed government reports, etc.,etc., etc. Her support of our organization is immeasurable.

Recently, Carolyn decided to take a step back and retire as President. We are very happy to report she will remain on the Board as Immediate Past President to provide guidance and support for both existing and new Board Members. So far, there are already 5 individuals taking on the tasks she's been performing over the last few years.

The Board wished to find a way to thank her for her years of dedication. At the Annual Meeting, she was granted Life Membership in Friends of Six Mile Cypress Slough Preserve.

Congratulations to Carolyn!

FRIENDS ACCOMPLISHMENTS 2016 Direct Support to the Slough of \$19,000 including:

Public wet walks for over 150 people
Camp scholarships for 21 campers
Camp supplies
Camp intern stipend
Camp speakers honoraria

Friends Field Trips including:
Clinic for the Rehabilitation Of Wildlife
Gordon River Greenway in Naples
Babcock Webb Wildlife Management Area
Fort Myers Beach Fishing Fleet
Funding for school field trip buses and teachers

Rocks added to Rock and Stroll Garden
Photo contest 55 photographers, 150 photos
Books for Blake Cadkin Resource Library
Four new rocking chairs for deck
Web site development and design
Seasonal displays for the Interpretive Center

Gathering speakers including:
Dr. Win Everham,
Florida Gulf Coast University
Dr. Serge Thomas,
Florida Gulf Coast University
Robert Repenning,
Land Steward, Lee County
Alexis Horn,
Sierra Club Panther Habitat , Campaign Coordinator

Volunteer of the Year
Volunteer thank you gifts
Accomplishment pins - volunteer education
Funded staff education opportunities
Friends Corner sales
Butterfly garden maintenance and plantings
University of Georgia students support
Funding for trail signage and markers
Funding for new guidebooks for boardwalk
Adopt A Highway Participation
Resource library reorganization

Complete 2016 Annual Report Available at:
www.sloughpreserve.org

FOLLOW FRIENDS ON FACEBOOK [FRIENDS OF SIX MILE CYPRESS SLOUGH PRESERVE](https://www.facebook.com/FriendsofSixMil)



TWEET WITH FRIENDS
@FriendsofSixMil



**ANNISA KARIM TO DISCUSS
INVASIVE PLANTS AND ANIMALS
AT APRIL 26TH FRIENDS GATHERING**



Annisa Karim

The speaker for the April 26, 2017 Friends Gathering will be Annisa Karim a member of Southwest Florida Cooperative Invasive Species Management Area (CISMA). She will be giving a presentation on combating invasive plants and animals.

Annisa has a Masters degree from the Department of Wildlife Ecology and Conservation from the University of Florida. She was a research associate for Dr. Martin Main and helped develop the curriculum for the Florida Master Naturalist Program. She joined the Lee County Department of Parks and Recreation as a biologist in February of 2009. She is currently the Manager for the East District of the Lee County Department of Parks and Recreation.

**ALONG THE BOARDWALK
Springtime in 2017**

by Dotty Brown

The March winds blow. John Muir in his book, *A Thousand Mile Walk to the Gulf*, recorded that he knew, without a map, that he had crossed into the subtropical savannah latitude when he heard the whispering of the wind coming through the pines and the brushing of the palm fronds. He distinguished the difference from the sound of wind through the hardwood trees! Have you listened? It is the wonderful time of birds' mating colors and feathers. Note the Ibis' red legs and bills, male Anhinga green eyes, Egret's special feathers. Watch for the mating dances at the rookery and the turtles' ventures onto the berms of ponds to lay their eggs. Understory plants germinate and grow in the lengthening daylight hours. The canopy develops its new leaves and blooms. Watch a squirrel Mom coax her young to run on a tree trunk! No two days are the same. COME ENJOY THE SEASON!



Dotty Brown

FRIENDS ELECT NEW OFFICERS, HEAR ABOUT 2016 ACCOMPLISHMENTS

By Theresa Roake

The Friends Annual Meeting was held March 22, 2017. The annual report for 2016 was presented by President Carolyn Babb. Highlights included a partial listing of Friends accomplishments for the year. Please see p. 2 for further details.

Board Elections were conducted as well. The following slate was elected as presented by the membership:

President:	Theresa Roake	Vice President:	Sabine Vandenhende
Directors:	Carolyn Babb, Lyn Brown, Jeff Key, Charles O'Connor, Bud Schopp		

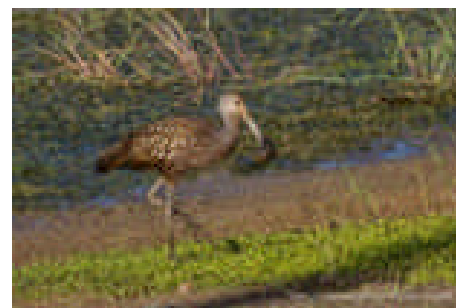
Board Member Jean Scholz is completing Frank Murrury's term as Treasurer. Additional current Directors are Donna Cressman, Terri Krass and Steve Tutko.

Land Stewardship Coordinator Bob Repenning was the speaker for the meeting. He provided an update on water levels and exotic plant treatment and removal throughout the Slough over the past year. In addition, he gave an in-depth presentation on the invasive island apple snail that we are now seeing everywhere in the Slough.



Fire Ants eating Island Apple Snail Eggs

It seems they are here to stay. The good news is that we are seeing more limpkins who enjoy the snails as part of their diet. We learned that fire ants will eat the snail eggs but we should be careful for what we wish! He also provided a "yummy" recipe for eating the snails if you have a few days to prepare the dish.



Limpkin with Island Apple Snail

Friends Field Excursions End 7-year Run

By Janet Bunch

As the final season of the Friends Field Excursions draws to a close, I thought I would provide all of you who have supported our adventures over the past 7 years, and who have made our adventures so successful, a few fun facts and statistics.

The excursions actually started with Carolyn Babb, Mary Murray and I just going on our own to places we'd not been to before. We had so much fun, we decided to broaden our reach and take a chance that other folks might want to join us. The rest, as they say, is history!

There have been 42 trips, with four of them within the Slough itself, two to Babcock Webb, and two to Flint Pen Strand, all with Bob Reppening. He took us on our final adventure March 28, to a different section of Flint Pen Strand. This was another great adventure and fitting finality to our excursions.

Sixty six people have gone on at least one of our adventures. Nobody went on all of them, although 16 people only went on one. We had 5 people who went on more than 20 trips - more than half of them.

We could not have had such a successful program without the dependable help provided by our drivers and their trusty vehicles! Suzanne Frechette and Jeff Montgomery I can't thank enough for pitching in. Who says vans are for soccer moms?

I also want to give a tip of the cap to my friends at Conservation 20/20 who have made themselves available every year to take us around so many of the wonderful preserves that help protect the county's drinking water supplies, provide stormwater storage and water quality protection, and shelter our most threatened wildlife species. They are all incredible people, working hard on our behalf, and we are so lucky to have them!

My hope is that by introducing these places to each of you, that you would be empowered to take YOUR friends to these magical places. This is how we teach the value of our natural places to a broader audience. Participation builds commitment!

Again, thank you all for sharing the adventures. It's been quite a trip!



Friends of Six Mile Cypress Slough Preserve prepare to enter Estero Bay after a stop at a beach. The Estero Bay boat tour with Joy Hazell in 2014 was one of 42 tours organized by Janet Bunch over the past seven years.

FRIENDS CORNER FUNDS MANY NEEDS

By Donna Cressman

The store called Friends Corner carries out the important financial mission of supporting the programs and material needs of the Slough. It has paid for educational materials, picnic tables, lunches, and many other items needed to keep things running smoothly. It stocks books and guides to answer kids' and adults' questions about the Slough and to encourage them to learn more and appreciate nature better. So, making a purchase at the Friends Corner is a good deed!

New items:

Postcards from our recent photography contest show the Slough in new perspectives. Smiley gator pillows are just plain fun!

Thank you for your support,
Donna Cressman, Manager

SHOP AT FRIENDS CORNER in
the
Interpretive Center or on line
at
friendscorner.qbstores.com



Black Crowned Night Heron
(photo by Carolyn Babb)

FRIENDS WEBSITE GETS NEEDED UPDATE

By Jeff Key

The web site for the Friends of the Six Mile Cypress Slough Preserve was updated this past year to accommodate differing platforms of access. The site was originally created by an FGCU intern as a set of pages on the Lee County site. The Friends took over maintenance of the site in November of 2005. We added new buttons and features and transferred it to www.sloughpreserve.org. The site was designed to be viewed from laptop or desktop computers. The web editing software was Microsoft Frontpage and utilized tables for organizing pictures and text through standard word processing that was automatically translated to html protocol (the "language" of web editing). As new devices came on the market place in recent years, the site became outdated as it was not easily viewed on the different size screens. Tablets and especially smartphones are now very popular viewing platforms for web sites and they come in different sizes. Laptops and desktop computers are still heavily used as well so today, web sites require code language that allows them to adapt to the device and screen size that accesses them.

First, utilizing the old table system, I designed a new template for the web site for Board approval. It mimicked a design from the Monterey Aquarium web site and was streamlined from 15 buttons to 7. A web designer was hired for the initial construction based on my design. Her name is Caressa Flannery from Create a Pulse Marketing in Frederick, MD. She created a slide show on the top of the home page with photo contest winners and other shots provided by Carolyn Babb and Charles O'Connor. For \$750, she provided the foundation for each of the 7 pages and then taught me how to add content. The project was a success in that the site can now be viewed easily on all platforms. Additionally, other designers were contacted and quoted higher prices.

The one feature of the old site that did not transfer to the new one was the photo contest pages. The board agreed last month to add 8 new pages to the site to accommodate the 2010 through 2017 photo contests featuring 153 prize winning pictures for \$1,425. The 2017 contest page is currently up on the site and the previous years are an ongoing project.

Please go and check it out!

www.sloughpreserve.org.

FRIENDS AGAIN OFFER SCHOLARSHIPS FOR SLOUGH CAMPERS



Four weeks of specialty camps are offered each summer at Six Mile Cypress Slough Preserve. Scholarships are awarded each year by the Friends of Six Mile Cypress Slough Preserve.

All sessions of the camps involve exploring and learning about nature through the beauty of the Slough.

The camp schedule for 2017 is shown below. Each scholarship covers the full cost of the camp program fee (\$75). Scholarships are awarded as acceptable applications are received. If a student is interested in attending two sessions, the Friends will grant two scholarships if the applicant's essay is accepted and space is available.

Camp Weeks 2017

*Note: Campers must be dropped off from 7:45-8:15am and picked from 4:00-4:30pm.

Camp Name	Age Group	Camp Size	Dates
Slough Secrets	8-9 years	15 campers	June 26-30; 8:00 a.m. – 4:30 p.m.
Summer Naturalists	10-12 years	15 campers per week	July 10-14 or July 17-21; 8:00 a.m. – 4:30 p.m.
Wilderness Explorers	12-16 years	20 campers	June 12-16; 8:00 a.m. – 4:30 p.m.

you know of any possible scholarship candidates, please contact Andee Naccarato (Camp Director) at ANaccarato@LeeGov.com or 7791 Penzance Blvd., Fort Myers, FL, 33966 for an application. If you have any questions, call Andee at 239-533-7555.



WINNERS PICKED FROM 150 PHOTO CONTEST ENTRIES

The winners of the Friends photo contest have been announced. The photos will remain on display in the Interpretive Center for the next year. Postcards of all of the photos are for sale in the Friends Corner. Fifty-five photographers submitted 150 photographs for judging.



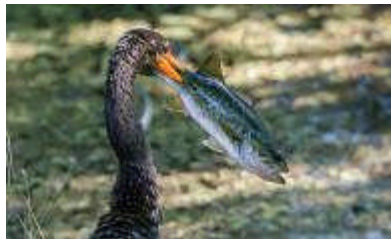
First Place-Animals
Rebecca Yu He



Second Place-Animals
John McConnell



Third Place-Animals



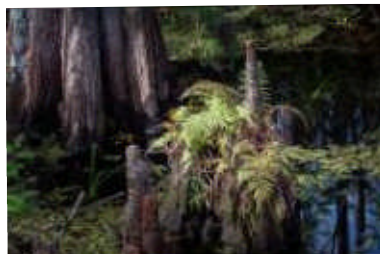
Honorable Mention-Animals
Larry Brophy



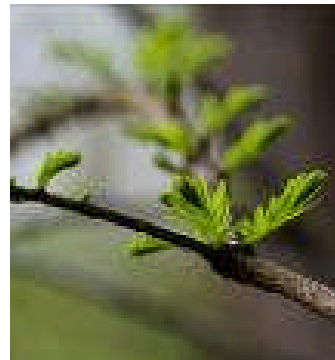
First Place-Plants
Richard Boucher



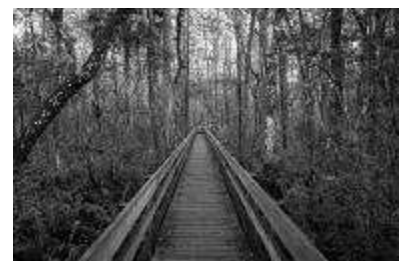
Honorable Mention-Open
Ben Anderson



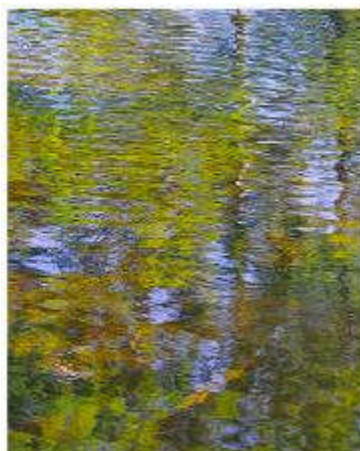
Second Place-Plants



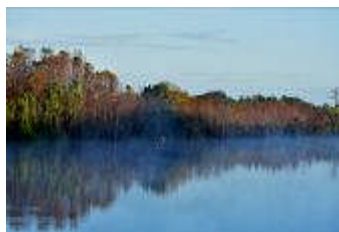
Third Place-Plants
Susan Carlo



Second Place-Open
Ed McDonough



First Place-Open
Deborah Wedekin



Third Place-Open
Duncan Metts

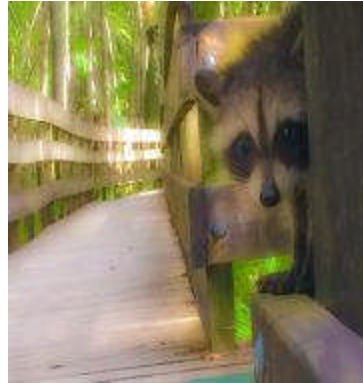


Honorable Mention-Animals
Mick Boesen

PHOTO CONTEST WINNERS



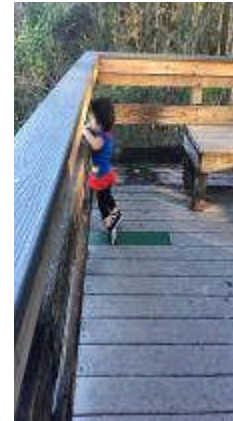
First Place-Altered
Duncan Metts



Second Place-Altered
Ben Anderson



Third Place-Altered
Chuck Pavlick



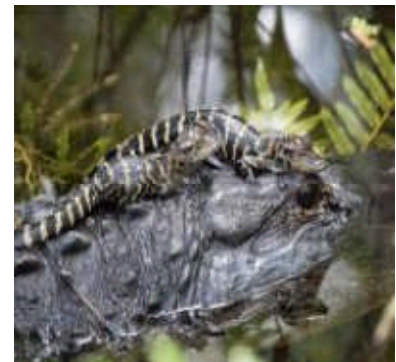
First Place-Youth
Katie Saladrigas



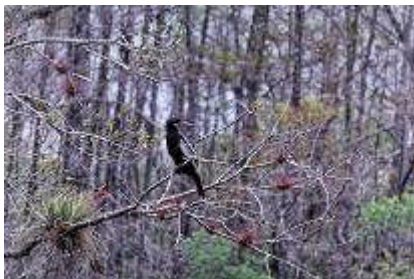
Second Place-Youth
Ava Ionnone



Third Place-Youth
Eric Venegas



Second Place-Staff
Sabine Vandenhende



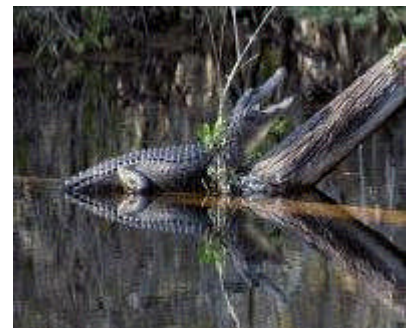
Honorable Mention-Youth
Eric Venegas



First Place-Staff
Charles O'Connor



Honorable Mention-Youth
Quinn Campbell



Third Place-Staff
Sabine Vandenhende

Renewing Members :
Thank you for
your continued support!

Audubon Society of Sanibel
Brenda Berg
Marlin Berkland
George Boyer
Linda and Ed Bradley
Frank Burns
Elizabeth Carter
Donna Cooper
Scott Cooper
Jan and Dave Cornell
Frankie and Wilmer Crain
Arlene Creeden
Donna Cressman
Linda Daniels
Theresa & William Fields
Eileen Fonferko
Nancy & Michael Frazier
Suzanne Frechette

Jan Grier
Linda & Carl Grispino
Andrea and Richard Houle
Terri Krass
Alice & Marty Krebs
Irmgard & Rudy Lampron
Lynda Leach
Gretchen Monti
Ann & Kevin Mullin
Mary & Frank Murray
Kris & Bob Nelson
Vicki and Roger Norton
Charles O'Connor
Lynn Placek
Poinciana Garden Club
Betty Prevatt
Wendy & Gregory Rex
Theresa & Steve Roake
Neil Scheffler
Judy & David Schele
Jim Sernovitz
Julie Shanahan
Mark Smith

Steven Smith
Don Stohler
Barbara VanAntwerp
Morag Walls
Vi Weis
David Zuhusky

Welcome New Members!

Joann Davis
Lance Ford
Joelle Hammes
Malachi Herck
Mary Jansma
Laverne & Janet Lindsay
Dave Minnick
Barbara & Ben Shearer

Additional Donations
Gratefully Received:

In Memory of Will O'Hara



JOIN FRIENDS TODAY!

Name _____

Address _____

City _____ State _____ Zip _____

E-Mail _____

Phone _____

In addition I would like to contribute

\$ _____ additional for the Friends use at the Slough.

TOTAL\$ _____

Membership Level (Please Check One)

- Student (\$10)
- Individual (\$20)
- Contributing (\$50)
- Supporting (\$100)
- Associate (\$250) - 1
- Sustaining (\$500) – 1, 2
- Corporate Sponsor (\$500) – 1, 2
- Patron (\$1,000) – 1, 2, 3

- 1- includes parking sticker for 18 Lee Co. Facilities.
- 2 - includes choice of wet walk or moon walk for ten guests.
- 3 - includes table or rocking chair naming opportunity

HOW CAN YOU HELP WITH YOUR TIME?
I AM INTERESTED IN HELPING WITH:

Mail to Friends of the Six Mile Cypress Slough, 7791 Penzance Blvd, Fort Myers. FL 33966

Friends of Six Mile Cypress Slough Preserve Corp. is a 501(c)(3) not-for-profit public charity. Registration Number CH13822 Florida Dept of Agriculture and Consumer Services

Friends of Six Mile Cypress Slough Preserve is a not-for-profit advocacy and support organization committed to preserving, protecting and promoting Six Mile Cypress Slough Preserve for future generations through education and community partnerships, working together with Lee County and South Florida Water Management District. The Six Mile Cypress Slough Preserve is a critical wetland system having positive value in inspiring and educating its visitors about wetlands and their roles in preserving the environment and local quality of life. Friends' vision is to maintain the Preserve's positive community influence in perpetuity.