



Connections

Newsletter for Friends of Six Mile Cypress Slough Preserve

OCTOBER 2011

MISSION STATEMENT

Friends of Six Mile Cypress Slough Preserve is a not-for-profit advocacy and support organization committed to preserving, protecting and promoting Six Mile Cypress Slough Preserve for future generations through education and community partnerships, working together with Lee County and South Florida Water Management District. The Six Mile Cypress Slough Preserve is a critical wetland system having positive value in inspiring and educating its visitors about wetlands and their roles in preserving the environment and local quality of life. Friends' vision is to maintain the Preserve's positive community influence in perpetuity.



Got wet? You bet. Wet walkers enjoy the Slough at her best.
Photo Charles O'Connor

2011 PHOTO CONTEST

Submittal of photos for the Friends of the Six Mile Cypress Slough Preserve third annual Photo Contest begins November 1, 2011. **The rules and entry information are included in this newsletter and on line at www.sloughpreserve.org.**

Please submit your favorite pictures of the slough to the contest. This event is an opportunity for you to share your beautiful views of this very special natural area and its *native* wildlife.

Award winners will be notified by February 15, 2012 and awards will be presented at a Photo Contest Celebration to be held at the Slough Interpretive Center on February 25, 2012. Winning photos will be displayed at the Slough Interpretive Center.

Our judges for this year's contest are:

- *Geoff Coe*, a professional photographer and owner of Wild Images Florida, and Slough volunteer naturalist.
- *James Mathisen*, US Fish and Wildlife Service Ranger and photography specialist.
- *Charles O'Connor*, Vice President and Education Chair for Friends and professional photographer in earlier career.

Entries will be accepted until 3:00 pm Tuesday, January 31, 2012 at the Interpretive Center at the Slough, 7791 Penzance Blvd. in Fort Myers. If there are any questions, please call the Friends at 239-533-7557.



2010 Photo Contest Winner
by Richard Burwell

SPEAKERS SCHEDULED FOR THE FRIENDS GATHERINGS

Wednesday, January 25, 2012 7:00 pm
Dr. Jerry Jackson, Florida Gulf Coast University

Wednesday, February 22, 2012 7:00 pm
Robert Repenning, Land Stewardship Coordinator
Lee County Parks and Recreation

Wednesday, March 28, 2012 7:00 pm
Amy Bennett Williams, journalist for *The News-Press*
Along the Caloosahatchee River
Annual Meeting

Wednesday, April 25, 2012 7:00 pm
Dr. Ernesto de la Vega, Lee County Hyacinth Control

All programs are scheduled for 7:00 pm at the Interpretive Center, Six Mile Cypress Slough Preserve, 7751 Penzance Blvd in Fort Myers. RSPV the day before the program to Friends at (239) 533-7557 or carolyn_babb08@comcast.net

INSIDE

- Summer Camp 2
- Photo Contest Rules 3
- Photo Entry Form 4
- Wet Walk Fun 5
- Along the Boardwalk 5
- Slough Programs 6
- Full Moon Walks 6
- Lee County Parks 7
- Land Stewardship 7
- Membership News 8
- President's Notes 9
- Membership Form 10

CAMP HAPPENINGS

Summer Camp Thank You! – by Heather Gienapp

This summer the Friends of Six Mile Cypress Slough Preserve provided funding for a number of activities for our Summer Naturalists and Wilderness Explorers Camps. Friends sponsored scholarships for campers who wrote essays about why they wanted to come to camp at the Slough. Also funded were Tai Chi classes which introduced campers to a new experience that beautifully tied into our nature awareness activities. Supplies were purchased for camp that included parachord and a whistle clasp that was used to make survival bracelets. The campers were so excited about the bracelets they wanted to make more than one! These items were a great addition to our summer camp program this year.



Campers show off their survival bracelets. Pictured in back row center are volunteer instructors Dennis and Kyle VonLinden
Photo Heather Gienapp

The Friends also sponsored a scholarship for Nathaniel Blichmann, an intern who helped with camp. Nathaniel was a wonderful help at camp and set a great example for the campers. Not only did he have a fantastic attitude, but he also lived a green lifestyle by riding his bike to camp – a one hour ride one way. Some days he carpooled, but many times he rode his bike home too. He contributed 178 volunteer hours to camp this year, and we are truly thankful that the Friends could reward him for his hard work.

One of the best parts of camp is hearing what the campers were thankful for or what they enjoyed about camp. Here are some of the written comments from campers about their experiences. This is from a scholarship winner: “Dear Friends, Thank you for giving me the fantastic opportunity to go to Slough camp. I had an amazing time here. I have learned a lot about nature. Also, I have had many new experiences. Last but not least, I have met a lot of great people. Thank you soooooo much!! Love, Tatiana.” These next comments were about the Tai Chi classes: “It was because of you guys (the Friends) that I got to learn Tai Chi. Thank you, Danielle”; To Vicki the instructor...“Thank you for putting me in a very peaceful state - Ben”; “Thank you for showing us all the cool moves. – Molly”

I truly appreciate having the Friends as a support group to help with summer camp. What you have contributed has affected the lives of 50 kids this summer. Not to mention the staff and counselors. Thank you all so much!



Photo Carolyn Babb

Campers learned to construct a shelter from natural materials.

The campers were taught the benefit of Tai Chi by instructor Vicki Brown.



Photo Heather Gienapp

SUMMER CAMP SHOTS



Photo Carolyn Babb

Friends Member and volunteer camp counselor, Mary Murray and lead camp counselor, Jamie Cole making survival bracelets.

Friends member and volunteer camp counselor, Rudy Lampron leading a camper through an exercise in the Slough.



Photo Carolyn Babb

2011 Friends Photography Contest

You are cordially invited to submit your best pictures to the third annual Six Mile Cypress Slough Preserve photography contest. This event is an opportunity for you to share your beautiful views of this very special natural area and its *native* wild-life.

Mail (or drop off) your photo(s), entry form, and entry fee (\$10 per photographer) to Six Mile Slough Preserve Photo Contest, 7791 Penzance Drive, Fort Myers, FL 33966, between November 1, 2011 and January 31, 2012 (contest closes at 3:00 PM).

The contest is open to amateur photographers only (may not possess a professional photographer tax identification number for the sale of photographs).

Photos must have been taken at the Six Mile Cypress Slough Preserve.

There will be a separate category for Friends' Board members, the contest judges, and the staff of Six Mile Cypress Slough Preserve entries.

Each contestant may submit a total of up to five photos. Photos may be submitted in any of the categories below:

1. Plants
2. Animals (including insects)
3. Open (any photo that does not belong in one of the above categories, such as landscape, abstract, people)
4. Altered Images (Plants, Animals, or Open) Images which are modified in ways not covered in the "Permitted Modifications" section below should be entered in the Altered Images category. Judges may, at their discretion, place an entry in this category if it shows clear evidence of such alteration.

Separate awards will be granted for contestants aged 17 and under.

Permitted Modifications (for categories 1-4, above)

- Red-eye removal and spot editing
- Use of filters or photo editing software to sharpen, soften, blur, despeckle, or remove noise
- Use of corrective functions to improve the natural appearance of the image, such as levels, contrast, brightness, curves, intensity, tone, hue, saturation, lightness, value, color balance, and tint.
- Judges reserve the right to reassign a photograph to a different category, or disqualify it.

Altered Images (Category 4)

Photographs manipulated for artistic purposes by applying digital and/or traditional special effects (i.e. hand coloring, bleaching, collage and photo composites, and filters applied to approximate other artistic techniques such as fresco, pen or pencil renditions, etc.).

Photos must be printed on the paper of your choice, 8" x 10" or 8" by 12". Please select a 6-character code and write it on a sticky Post It Note; attach it on the back of each of your photographs. Note each code on your entry form.

For a photo in which a person is recognizable, you must secure a model release from the subject or, in the case of a minor, the subject's parent or guardian and provide it to *Friends of Six Mile Cypress Slough Preserve* upon request.

Judging

Entries will be judged on the basis of creativity, photographic quality, and effectiveness in conveying the beauty and/or unique character of Six Mile Cypress Slough Preserve in one of the contest categories. Judging will be anonymous. The contest judges will not have access to the entry forms.

First, second, and third place will be awarded in each category. Contestants are eligible to win only one award in each category. One photo will be selected from all the winners as the "Top Shot".

Miscellaneous

Award winners will be notified by February 15, 2012 and awards will be presented at a Photo Contest Celebration to be held at the Slough Interpretive Center on February 25, 2012. Winning photos will be displayed at the Slough Interpretive Center.

Prints will become the property of Friends of Six Mile Cypress Slough Preserve. The Six Mile Cypress Slough Preserve is not responsible for lost or damaged photos.

By entering the contest, photographers agree that *Friends of Six Mile Cypress Slough Preserve* may display winning photos and may make and retain copies of the photographs for educational purposes and fundraising without any fee or other form of compensation.

Friends of Six Mile Cypress Slough Preserve is designated by IRS a 501(c)(3) not-for-profit corporation, and registered charitable organization # CH13822 in compliance with Florida Division of Consumer Services requirements.

2011 PHOTO CONTEST ENTRY FORM

Six Mile Cypress Slough Preserve 2011 Photo Contest Entry Form

Name _____ Age 17 or Under? _____
Address _____
City _____ State _____ Zip _____
Phone _____
Email _____

Please mark your personal code on a post it note (or similar) and attach to the back of the photo (s) being submitting.

Category:

Plants:

Photo #1 code _____ Photo #2 code _____ Photo #3 code _____ Photo #4 code _____
Photo #5 code _____

Animals

Photo #1 code _____ Photo #2 code _____ Photo #3 code _____ Photo #4 code _____
Photo #5 code _____

Open

Photo #1 code _____ Photo #2 code _____ Photo #3 code _____ Photo #4 code _____
Photo #5 code _____

Altered

Photo #1 code _____ Photo #2 code _____ Photo #3 code _____ Photo #4 code _____
Photo #5 code _____

Send your photos (Maximum of five photos) to Six Mile Cypress Slough Preserve Photo Contest, 7791 Penzance Blvd., Fort Myers, FL 33966, by January 31, 2012. Be sure to include a check for your \$10 entry fee made out to Friends of Six Mile Cypress Slough Preserve. You will be notified by February 15, 2012 if you have won or placed in the contest. Awards reception will be on Saturday, February 25, 2012 at Noon. Thank you for entering and good luck!

Photo Release Form

Permission to Use Photograph in 2011 Photo Contest sponsored by Friends of Six Mile Cypress Slough

I grant to Friends of Six Mile Cypress Slough ("the Friends") the right to take photographs of me and my family in connection with the above-identified event

I authorize the Friends, its assigns and transferees to copyright, use and publish the same in print and/or electronically.

I agree that the Friends may use such photographs of me with or without my name and for any lawful purpose, including for example such purposes as publicity, illustration, advertising, and Web content.

I have read and understand the above:

Signature: _____

Printed Name: _____

Address: _____

Date: _____

Signature, parent or guardian if under 18: _____

GOT WET? YOU BET!



WET WALKING IN THE SLOUGH



Friends Vice-President Charles O'Connor was the leader for seven wet walks with over 150 folks through the Slough this summer. Fortunately, this year there was above average rainfall in Lee County.

Charles is pictured top left at the beginning of the walk in an ephemeral pond behind the Interpretive Center.



Photo center left is of one of the largest bald cypress trees in the Slough, a lucky remainder from the logging days of old.

The other photos show different locations throughout the walk.

Join the Friends for this adventure next year. Thanks to Charles for the fantastic experience.



Photos Charles O'Connor and Carolyn Babb

Along the Boardwalk.....Reading the autumnal slough by Dotty Brown

Earth has cycled to its autumnal equinox. With declining daylight hours, nature turns to storing her genetic codes in seeds, sori and spores. Note the ripened cypress cones on the amber needled trees that will drop and open the Ibis Marsh stage. Wax myrtle, sweet gum trees and oaks are ripening their fruits. All of these provide the food supply for our resident animals. Migrating birds will find seeds from the productive vegetation. Copulating turtles have been observed in Ibis Marsh and Otter Ponds. Apple snail eggs are already laid on stalks of the alligator flag at Wood Duck. Bladderwort blooms rise above the mats of algae on Wood Duck Pond and its surrounding waters. White vine (milkweed vine), pickerel weed, duck potato, alligator flag, primrose willows and Spanish needles dot the slough with color. A lubber grasshopper suns on an exposed twig. Cicadas serenade the slough throughout the boardwalk's reach. Enjoy the autumnal breezes as you observe the seasonal changes.



SLOUGH PROGRAMS SCHEDULED FOR FALL AND WINTER



Tai Chi Thursdays January 12, 2012 through February 16, 2012, 2:00 pm to 3:00 pm

Yoga Tuesdays January 10, 2012 through February 14, 2012, 9:00 am to 10:15 am

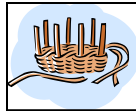


Tracking Club Saturdays, September 24, 2011 through January 14, 2012, 10:00 am to 2:00 pm

Skull ID 101 Tuesdays, January 10, 2012 through March 27, 2012, 1:30 pm to 2:30 pm

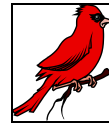


Basket Making Class



Saturday, November 1, 2011, 9:00 am to 12:00 pm

Intro to Birding Thursday November 17, 2011, 9:00 am to 11:00 am



FondZoo Art Tuesday, January 10, 2012, 12:30 pm to 3:30 pm

Working Your Digital Camera Wednesday, January 18, 2012 or Saturday, January 21, 2012 10:00 am to 3:00 pm



Native Plant Uses, Tuesday, December 13, 2011, 10:00 am to 12:00 pm

Alligator Detectives, Saturday, December 3, 2011, 11:00 am to 12:00 pm



EXPLORE THE SLOUGH BY THE LIGHT OF THE FULL MOON

Experience the Slough in the light of the full moon on this guided sensory walk. You may hear sounds that you will not hear in the day, smells that come and go and feel changes in air temperature as you walk along the boardwalk.

A volunteer naturalist will lead you along the boardwalk as the moon rises over the Slough.

You should wear comfortable walking shoes. No flashlights needed.

No cameras with flashes are allowed.



Thursday	November 10, 2011	5:45 pm
Friday	December 9, 2011	5:30 pm
Saturday	January 7, 2012	5:45 pm

2010 Photo Contest Winner
by Vincent Abbatiello

Reservations are required for programs. Register for programs online at leeparks.org or by calling Lee County Parks and Recreation at (239)533-7275.

Lee County Parks & Recreation Passes Re-accreditation

Review by Mary Rude



On April 28, 2011 the Friends of Six Mile Cypress Slough Preserve generously sponsored a luncheon for Lee County Parks and Recreation's Accreditation Team. About a dozen volunteers were asked to attend to talk about their volunteer role at the Slough and to share some of their experiences. The Slough was asked to host the luncheon and to meet the panel because of our unique facility in the County, the Silver Certified Green building, the incredibly supportive Friends group and the fabulous volunteers.

The volunteers made a quite an impression on the Review Team. The Team thought our facility was top notch, but were mostly captivated by the "super-human" volunteers. They really enjoyed hearing the wide variety of roles the volunteers fill from guides to front desk person to land stewardship to photography, summer camp, clean-up, scheduler and on and on. The volunteers *are* impressive! They were also really inspired by the achievements of the Friends. One of the Team members talked to me individually and said that he was charged up by the energy that is created here.

Thank you also to Friends for sponsoring the luncheon and for all the energy that you put into supporting this wonderful facility. See below email from Parks and Recreation director, Barbara Manzo, to see how well the process went.

"WOW! What a great review we received!!!"

After three days of work and tours our Reviewers sat with us yesterday morning and went over our accreditation review. They spoke about each of the 10 chapters and each one was nothing but praise! We passed 100% of the 144 Standards of Excellence!

This is an incredible testament to the dedication of all of you to our department.

Many times they commented on the incredible fellowship among staff and they were overwhelmed by your professionalism, years of service and how even during these tough economic times you still make it happen.

The efficiency of the files and the entire self review process was the best they had ever seen. They were overwhelmed by our facilities, their cleanliness and excellent maintenance.

Our Reviewers commented that they had never seen such buy in by any department before.

So...you are all truly amazing and I thank you from the bottom of my heart for all you do to make Parks and Recreation the great Family we are!"

Who: The Commission for Accreditation of Parks and Recreation Agencies (CAPRA) oversees a systematic evaluation of the agency's management and operation practices in 10 major categories of 144 best-practice standards.

What: Accreditation is a quality assurance and quality improvement process demonstrating an agency's commitment to its employees, volunteers, patrons and community. Fewer than 100 agencies internationally and throughout the United States have successfully completed the accreditation process.

When: The re-accreditation process for Lee County Parks & Recreation began with submittal of the formal application and self-assessment. The next critical juncture in the process is the site visitation from the National Accreditation Team scheduled for April 26, 27 and 28.

Where: The accreditation team will be visiting facilities and programs to get a firsthand look at what Lee County Parks & Recreation has to offer.

Why: Accreditation has two fundamental purposes: to assure quality and to assure improvement. Because we believe this is critical, everyone throughout Parks & Recreation needs to be aware of, informed about and advocate for this effort.



Barbara Manzo, Director of Parks and Recreation, makes presentation to accreditation panel.
Photo Kathy Cahill

Land Stewardship Works in the Slough

by Robert Repenning

I have a unique position as the Land Stewardship Coordinator for the slough. I have the technical experience and training to deal with issues that come up that impact the slough such as adjacent development, water use, dealing with complaints, land acquisition, attend hearings, bidding out work, supervising contractors and writing stewardship plans, as well as, doing the hands on land management activities such as exotic plant removal, taking down old barbed wire fences, fixing new fences, clearing areas of overgrowth to prevent habitat destroying wild fires, and picking up trash dumped on the preserve. These are two jobs that should be different pay grades. I am paid to do the technical part of the job but enjoy the visible results of the hands on part of the job. To justify the high pay I get to do the hands on work, I train, coordinate and work with interns, volunteers, students and service groups to assist with this work.

Each year in December as part of my performance appraisal I come up with what I will do to manage the slough for the next year. The caveat I work under is I have no staff and no dedicated funding to hire contractors and a five passenger truck, that I share and have only three days a week. This past year I picked several projects near the building where transportation is not a problem. Projects were setup to take advantage of groups volunteering such as Boy Scout Troops, 4-H and service organizations.

This past year, land stewardship volunteers donated many hours of time to the slough. This included a Boy Scout Troop, Student interns from FGCU and North Carolina, students from FGCU and Friends of the Slough members and volunteers. I have several regular workers who put in many hours of helping out. These workdays have contributed to the control of exotics in the slough, clearing almost an acre of brush from flatwoods, removing vines and landscaper tape from planted trees to reforest a section of the slough that was cleared of melaleuca in the past and remove a half a mile of barbed wire fence.

If you would be interested in helping with these projects email me. I send out monthly announcements of the projects I need help with and describe the project. If you don't think you can do the work you don't have to sign up for the hard ones. Just email me (rrepenning@lee.gov) and I'll put you on the list.



Bob and a group of volunteers working at the entrance of the Slough.
Photo Bob Repenning

MEMBERSHIP NEWS

Renewing Members: Thank you for your continued support!!

Dr. & Mrs. William B. Akerly
Brenda Brooks
Dick Burwell
Susan Crawford &
Jeff Rosemann
Ann & Randy Deming
Timothy Denger
Samantha & Daniel Eagan
Peggy Egan
Theresa Fields
Joseph Galipeo & Nancy Bright
Elizabeth Schallenberg C
Rick Tully C
Mr. & Mrs. Steven F Ulrich
Jeff Zasadny

“C” denotes Charter Member, persons who were first year members of the Friends.

Welcome New Members !!

Steve & Laurie Cadkin
Sally Ennis
Laurie & Stephen Newland

Additional Donations Gratefully Received From:

Cadkin Foundation
Rosemann Family Foundation
Sally Ennis

**TRASH PICKUP FOR THE SLOUGH
THIRD SATURDAY OF EVERY
MONTH**

**JOIN US 9:00 a.m.
FUN AND FRIENDS**

**VOLUNTEERS ALWAYS NEEDED
AT FRIENDS CORNER.**

**ALSO NEEDED— A STORE
MANAGER (S)
BUYING, BOOKKEEPING,
INVENTORY
CONTACT CAROLYN BABB**

Special Events Scheduled for Winter

The Friends Special Events coordinator, Janet Bunch, has a “slough” of activities throughout the area from November until March of 2012. There should be something of interest for anyone. She will be there with helpers (Any volunteers?) to promote the Slough and our organization.

NOVEMBER 19 The Charlotte Harbor Nature Festival on Saturday, November 19th at the Charlotte Sports Park from 10 :00 am until 3:00 pm

FEBRUARY 25 The Cape Coral Friends of Wildlife Burrowing Owl Festival on Saturday, February 25th at the Rotary Park in Cape Coral from 10:00 am until 4:00 pm

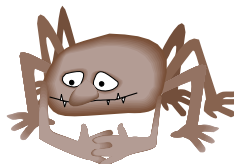
MARCH 31 The CREW Wildflower Festival on Saturday March 31 from 8:00 am until 2:00 pm



Newest Addition to the Slough Family Makes His Appearance August 30, 2011

Heather and Jon Gienapp welcomed baby boy, Nathaniel Elvin, to the world on August 30, 2011. Heather is the Senior Program Specialist at the Slough.

Baby Nathaniel weighed in at 7 pounds and 13 ounces and is 21 inches tall. Momma and baby are doing well. Daddy is also hanging in there. Welcome to the Slough family, Baby Nathaniel.



**SAVE THE DATE!!!!
FRIENDS POTLUCK
WEDNESDAY,
DECEMBER 14
6:00 PM
INTERPRETIVE
CENTER**

Friends Volunteer for Summer Camp

Three Friends members acted as volunteer counselors for Slough summer camp. The three are also volunteer naturalists at the Slough.

Rudy Lampron has 6 years of summer camp experience under his belt. Rudy is a great mentor to the campers who really look up to him.

Mary Murray enjoyed camp last year and returned this year for a week of each camp. She led the campers on their guided walk on the first day of camp and also helped guide them in nature and survival skills.

Janet Bunch jumped right into her first summer in Florida by also helping with summer camp. She was a helper during the weeks opposite of Mary and presented a program and walk to the campers entitled “Crawly, but not Creepy”. (All about spiders.)

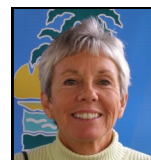
Thanks to these great “Friends.” We applaud their efforts with these young campers. This is a wonderful way to promote our mission to preserve the Slough by the current generation for future generations.



Rudy Lampron



Mary Murray



Janet Bunch



Advisory Board

Jacquelin Cadkin
Cadkin Foundation

Carolyn Delizia Swift

Dr. William Hammond
Florida Gulf Coast University

Carol Newcomb-Jones

Wiley M Parker, A.I.A.
Parker, Mudgett/Smith
Architects, Inc.

Board of Directors

Carolyn Babb
President

Charles O'Connor
Vice President

Frank Murray
Treasurer

Theresa Roake
Secretary

Donna Cressman

Nancy Johnson

Jeff Key

Bernard MacDonald

Molly Meadows

Joyce Sanders

Jean Labriola Scholz

Steve Tutko

**Parks and Recreation
Liaison**

Mary Rude, Supervisor
Six Mile Cypress Slough
Preserve

**Friends Thank
Summer Intern
Nathaniel Blichmann**



Photo Heather Gienapp

Summer camp would not be possible without the help of the volunteers, some Friends members and another person like Nathaniel Blichmann, the Slough's summer unpaid intern.

Nathaniel was at camp five days a week for four weeks this summer plus he attended one week of training. He rode his bicycle to the Slough which was about an hour away from home. According to Heather Gienapp, camp supervisor, Nathaniel was huge asset camp for many reasons. He has a biology background which was extremely helpful with the camp curriculum. He was able to communicate with the campers and had a great manner and was a wonderful mentor to the campers.

The Friends thank Nathaniel for his enthusiasm and his help. He was presented with a \$500 check by Friends President Carolyn Babb at the end of camp.

**Slough Parking Lot
Lighting Installed**



Lee County Parks and Recreation staff have installed two posts with low level lighting at the parking lot of the Slough. The lights will only be used for lighting after meetings or gatherings scheduled at the Interpretive Center that end after dark. Added bonus of the lighting installation are bird boxes that hopefully will be attractive to some of the feathered "Friends" residing at the Slough.

Hello Friends,

I was right. It started raining and hasn't stopped. Amazing, that's why it's called the rainy season. But visitors are still walking the boardwalk and the wet walks led by Charles were standing room only!

We anxiously wait the new season of visitors, old and new. I look forward to seeing all of the "regulars" who come from as far away as Sweden and Canada. There are weekly visitors that walk the boardwalk checking out everything the slough has to offer, taking advantage of the relaxing opportunities available. I love to share the happenings at Otter Pond every Thursday. I continue to learn so much on these mornings. Just when you think you have seen it all, something new happens. One morning this summer I watched an aninga drying out on the button bush in the middle of the pond. Nothing new there, they do it all of the time. But there was a loud crash from the road project on Six Mile and the aninga jumped straight up in the air and looked around for the disturbance. He was visibly rattled. It really brought home how noisy we might be to the critters that call the Slough home. Hopefully that construction will be finished soon!

I can't wait to see how the new lighting in the parking lot works for our monthly gatherings. Not sure what staff will do if some owls or birds decide to actually USE the bird boxes on the poles above the lights. Any new occupants will have to live with front porch lights. Thanks to Lee County for making it safer to get to our vehicles in the dark after the gatherings.

Charles has scheduled some great, new speakers for the gatherings. There is something of interest for everyone. There will be refreshments and maybe some door prizes also. Please try to join us for at least one of the evenings if not all!

Friends Corner has been restocked with books, magnets, shirts and a new line of earrings by Bamboo. The earrings come in a bamboo box with the Friends logo on the top. Pretty fancy.

And don't forget the potluck on December 14th. Bring your best dish to taste. Good food, good Friends and a good time. Looking forward to seeing everyone this winter. See you at the Slough! CB

Connections Staff

Editor/ Lay-out/ Design	Carolyn Babb
Copy Editor	Bruce Bunch
Printing Facility	Lee County at Terry Park



JOIN FRIENDS TODAY!

Name _____

Address _____

City _____ State ____ Zip _____

E-Mail _____

Phone _____

In addition I would like to contribute

\$ _____ for exhibits and displays for the Interpretive Center.

TOTAL\$ _____

Membership Level (Please Check One)

- Student (\$10)
- Individual (\$20)
- Contributing (\$50)
- Supporting (\$100)
- Associate (\$250) - 1
- Sustaining (\$500) - 1, 2
- Corporate Sponsor (\$500) - 1, 2
- Patron (\$1,000) - 1, 2, 3

- 1- includes parking sticker for 17 Lee Co. Facilities.
- 2 - includes choice of wet walk or moon walk for ten guests.
- 3 - includes rocking chair naming opportunity.

HOW CAN YOU HELP WITH YOUR TIME? I AM INTERESTED IN HELPING WITH:

Mail to Friends of the Six Mile Cypress Slough, 7791 Penzance Blvd, Fort Myers. FL 33966

Friends web site: www.sloughpreserve.org Phone 239-533-7557

Special thanks go to the Lee County Department of Parks and Receptions for its generous support in producing this newsletter. Thanks to Lee County also for providing meeting space at the Six Mile Cypress Slough Preserve Interpretive Center.

POTLUCK - INTERPRETIVE CENTER
WEDNESDAY, DECEMBER 14, 6:00 pm
MARK YOUR CALENDERS!

Friends of Six Mile Cypress Slough Preserve
7791 Penzance Blvd.
Fort Myers, Florida 33966

ADDRESS SERVICE REQUESTED

